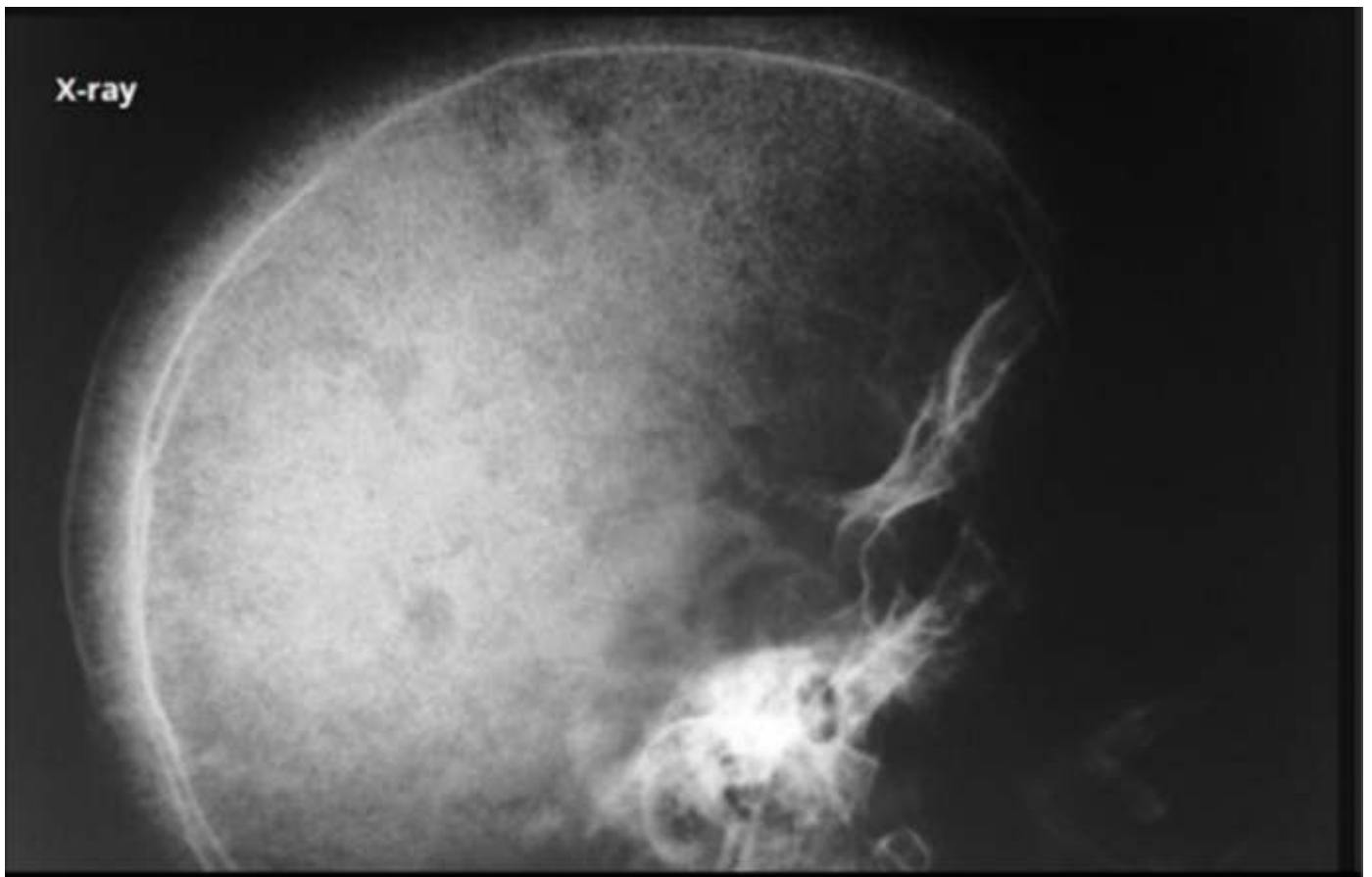


## Image Corner

What is the sign and Condition in this X Ray Skull?



- Marked vertical striations in a patient with thalassaemia give the appearance of hair standing on end so called Hair on end sign.
- Thalassemia/ Hair on end sign

*Dr. P. Muthaiah*  
*Professor of Radiodiagnosis at Saveetha Medical College Chennai*